

PART OF THE NW. 1/4, OF SECTION 28, T.6N., R.2W., S.L.B. & M.

792

TAYLOR LANDING PHASE 2

IN WEBER COUNTY

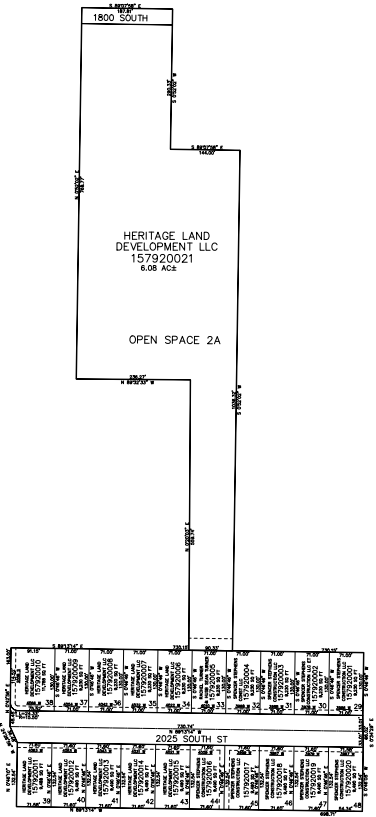
TAXING UNIT: 514

SCALE 1" = 200'

SEE PAGE 78-4

SEE PAGE 78-4

SEE PAGE 78-4



SEE PAGE 78-4

10' UTILITY & DRAINAGE EASEMENTS EACH
SIDE OF PROPERTY LINES AS INDICATED
BY DASHED LINES EXCEPT AS OTHERWISE
SHOWN.

FOR COMPLETE SURVEY DATA SEE
ORIGINAL DEDICATION PLAT IN
BOOK 93, PAGE 45 OF RECORDS.